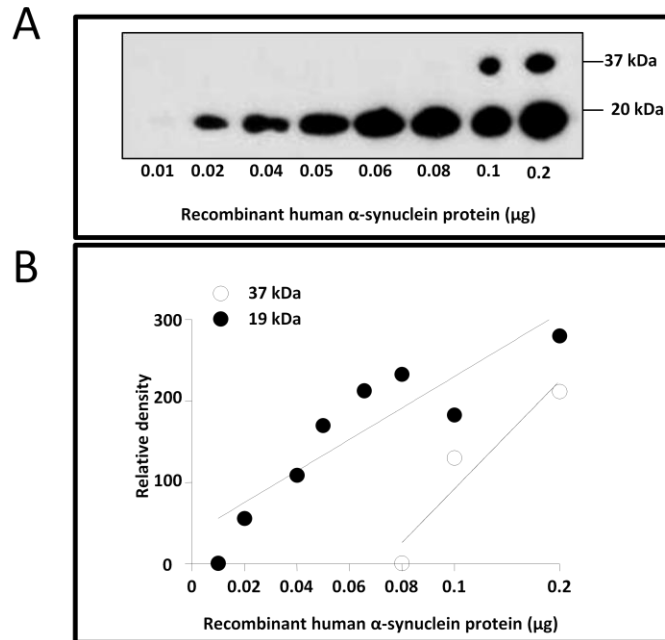


Supplemental Figure 1



Supplemental Figure 1: The specificity of the alpha-synuclein antibody was confirmed by using Western blotting of purified recombinant α -synuclein protein. (A) Serial dilution of recombinant α -synuclein protein (0.01–0.2 μg) was loaded across the lanes and probed by Western analysis. (B) Standard curve generated from the densitometric values was obtained from digitized film of the immunoblot. A linear relationship between optical density and the amount of recombinant α -synuclein protein exist with a correlation coefficient of 0.95. The lower (~19 kDa) and higher molecular weight species (~37 kDa) of recombinant human α -synuclein peptide are shown (N=3).